

Effects of the Lowered Missionary Age

Research Information Division

Quick Query Surveys

Spring/Fall 2013

Ward Leaders and Councils: A Status Report

Source of Information

2,156 ward council members in five countries (USA, UK, Mexico, Philippines, and Ghana) filled out paper-and-pencil surveys at church.

	USA	UK	Mexico	Philippines	Ghana
Respondents by Country	823	230	405	362	336

	Bishop	Clerk	HPGL	EQP	WML	YMP	SSP	RSP	YWP	PP
Respondents by Calling	236	216	180	219	213	213	200	227	228	224

Major Findings

1. Compared to the USA, ward leaders and councils in international areas face many more challenges (e.g., personal limitations, staffing).
2. Wards are generally following Church policies in how frequently they hold administrative meetings and who attends.
3. Most ward councils spend more time on missionary work and meeting individual/family needs than other things.
4. Male leaders tend to report more challenges and less support in fulfilling their callings.

Major Findings

- 1. Compared to the USA, ward leaders and councils in international areas face many more challenges (e.g., personal limitations, staffing).**
2. Wards are generally following Church policies in how frequently they hold administrative meetings and who attends.
3. Most ward councils spend more time on missionary work and meeting individual/family needs than other things.
4. Male leaders tend to report more challenges and less support in fulfilling their callings.

Ward Council Callings Functioning at least “Okay” (reported by bishops, ranked highest to lowest)

	USA (n=86)	UK (n=25)	Mexico (n=48)	Phil. (n=41)	Ghana (n=36)
Bishopric 1st Counselor	98%	96%	91%	95%	89%
Primary President	99	96	83	82	94
Relief Society President	100	100	83	79	88
Bishopric 2nd Counselor	100	88	85	88	86
Young Women President	98	100	78	77	94
Elders Quorum President	92	88	63	55	85
Ward Clerk	94	79	56	71	79
Young Men President	97	75	65	66	76
Mission Leader	92	88	54	63	79
Sunday School President	81	50	55	62	82
Executive Secretary	94	68	60	54	46
High Priests Group Ldr.	94	83	49	43	51

Ward Council Callings Functioning “Very Well” (reported by bishops, ranked highest to lowest)

	USA (n=86)	UK (n=25)	Mexico (n=48)	Phil. (n=41)	Ghana (n=36)
Relief Society President	97%	92%	54%	33%	47%
Primary President	90	79	54	33	56
Young Women President	86	75	50	31	59
1st Counselor	88	58	50	43	40
2nd Counselor	86	54	45	37	37
Ward Clerk	84	42	30	21	44
Young Men President	70	38	35	21	38
Mission Leader	62	46	33	18	41
Elders Quorum President	66	50	33	16	32
Executive Secretary	73	28	34	15	29
High Priests Group Ldr.	73	25	24	13	17
Sunday School President	44	8	34	15	30

Ward Council Staffing

	USA	UK	Mexico	Philippines	Ghana
Fully-staffed ward councils	88%	56%	38%	32%	42%
Ward councils with all 12 rated positions functioning “okay” or better	65%	17%	15%	14%	19%

Ward Council Members Who “Do not” or “Just Barely” Meet Basic Needs for Food, Clothing, and Shelter

USA	UK	Mexico	Philippines	Ghana
16%	26%	79%	82%	70%

Ward Council Members' Access to Technology

Green= relatively high Red=relatively low

	USA	UK	Mexico	Philippines	Ghana
Computer or Laptop	97%	98%	78%	47%	44%
Smartphone	71%	74%	37%	42%	51%
Mobile Phone (any kind)	97%	94%	97%	96%	97%
Internet Access at Home	98%	97%	74%	38%	31%
LDS Account	92%	88%	61%	59%	43%
E-mail Account	97%	96%	82%	67%	61%
Social Network Account (e.g. Facebook)	67%	75%	68%	65%	58%
Skype or Google Voice Account	53%	61%	34%	28%	27%
Motor Vehicle (e.g. car, motorcycle)	97%	90%	54%	39%	25%

Ward Council Members Who Used Technology to Communicate with Other Ward Leaders Last Week

Green= relatively high Red=relatively low

	USA	UK	Mexico	Philippines	Ghana
Phone conversation	87%	81%	75%	50%	78%
Text message	72%	73%	60%	74%	45%
Visit their home	44%	36%	57%	52%	59%
E-mail or instant message	77%	76%	42%	25%	27%
Social network site	20%	38%	35%	26%	28%
Write a letter	6%	7%	6%	12%	12%

Youth leaders and women auxiliary presidents tend to use social network sites more than others. Bishops tend to use most forms of communication more than others.

Ward Council Members Limited “A Lot” By...

	USA	UK	Mexico	Philippines	Ghana
Work or school responsibilities	11%	14%	13%	18%	15%
Family obligations	7	7	1	13	6
Health	1	4	1	8	7
Family income/resources	1	2	2	8	7
Lack of support from family	1	2	1	4	6
Transportation	0	0	1	5	6
Any of the Above Limitations	18%	25%	25%	38%	39%

Organizational Challenges

No Challenge

A Little

Moderate

A Big Challenge

Difficulty Getting Members to Accept Callings



Lack of Support From Ward Members



Uncertainty How To Counsel



Turnover In Key Positions



These challenges tend to be greater for EQPs than others

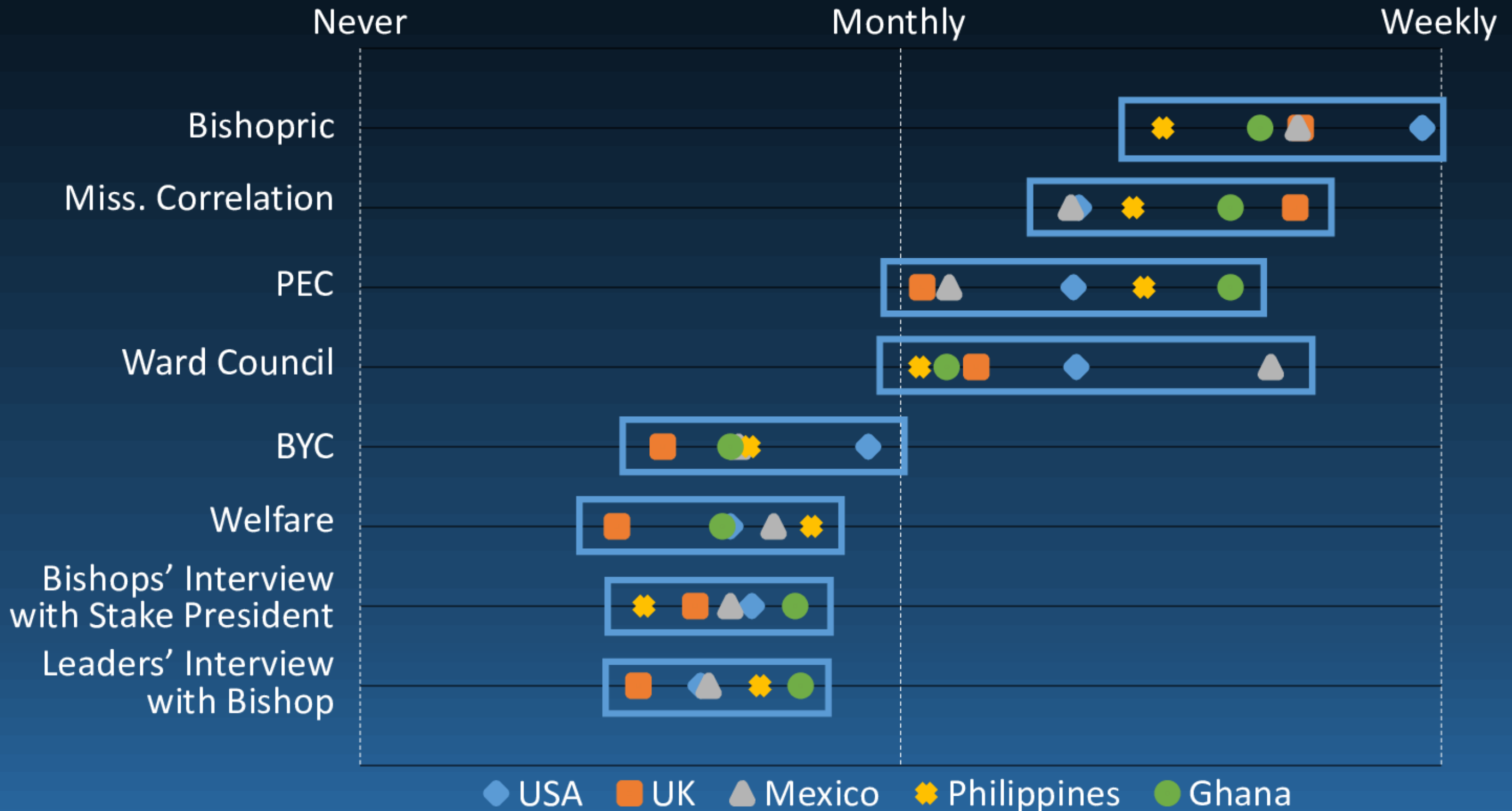
◆ USA ■ UK ▲ Mexico ✦ Philippines ● Ghana

Source: RID Leadership Feedback Survey, 2013

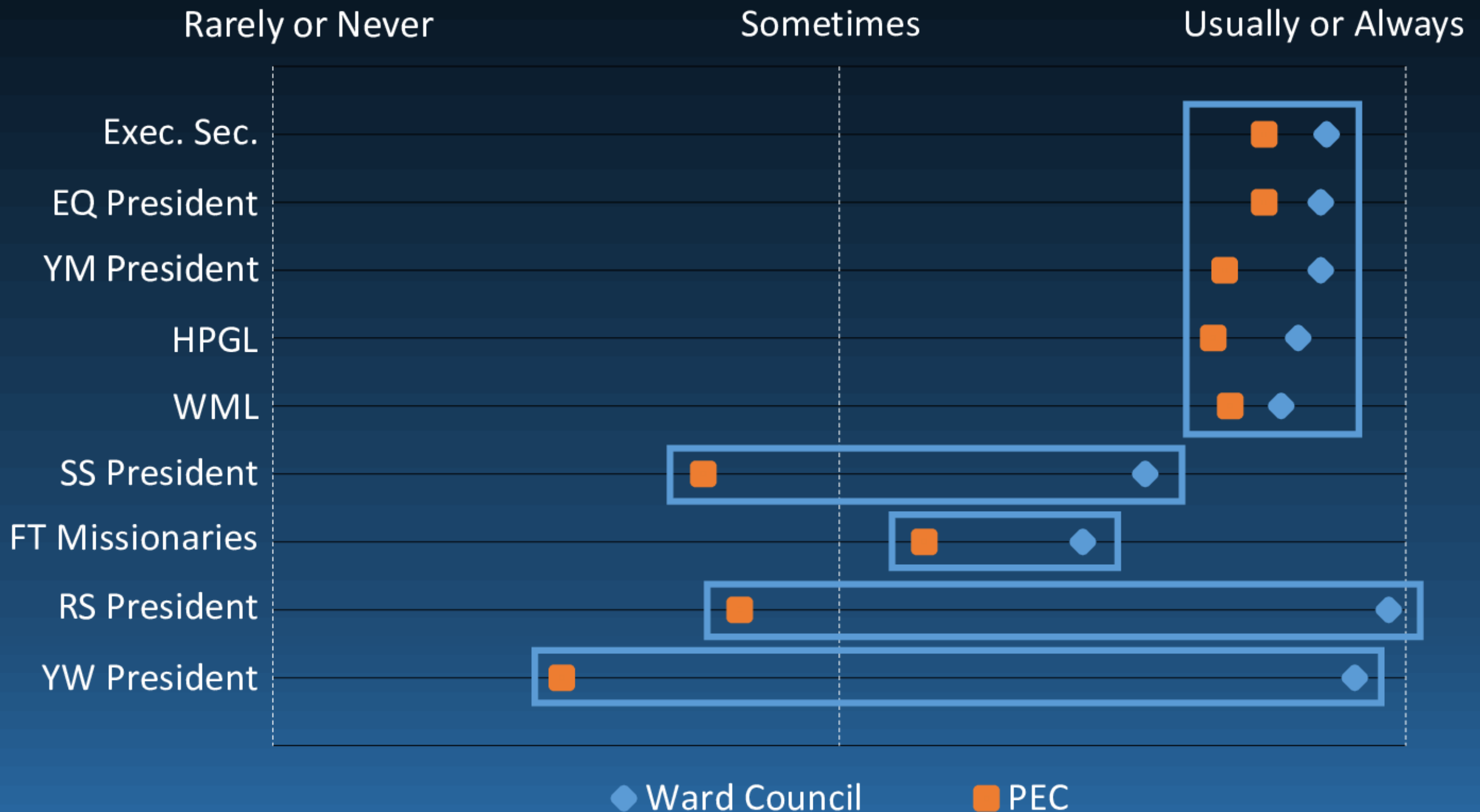
Major Findings

1. Compared to the USA, ward leaders and councils in international areas face many more challenges (e.g., personal limitations, staffing).
- 2. Wards are generally following Church policies in how frequently they hold administrative meetings and who attends.**
3. Most ward councils spend more time on missionary work and meeting individual/family needs than other things.
4. Male leaders tend to report more challenges and less support in fulfilling their callings.

Frequency of Meetings



Who Attends PEC and Ward Council



Frequency of Other Meetings

Meeting	WC Members Impacted	Frequency	Group Differences
Presidency Meetings	RSP, HPGL, EQP, SSP, YMP, YWP, PP	About monthly	USA+, Ghana+, UK-
			RSP+, PP+, YMP-, SSP-
Socials/Weekday Activities	RSP, HPGL, EQP, WML	Less than monthly	USA-, UK-
			RSP+, WML+
PPIs with Quorum Members	HPGL, EQP	Less than monthly	Ghana+, Mex.-, Phil.-
Mutual	YMP, YWP	About weekly	UK+, Ghana-, Phil.-
Duty to God/Personal Progress	YMP, YWP	About monthly	USA-, UK-, Ghana+
			YWP+
Temple Trips	YMP, YWP	Less than monthly	Mex. +, Phil.+
Activity Days	PP	About monthly	USA+
Missionary Correlation	WML	About weekly	Mex.-
Teacher Development	SSP	Less than monthly	Ghana+, UK-

Major Findings

1. Compared to the USA, ward leaders and councils in international areas face many more challenges (e.g., personal limitations, staffing).
2. Wards are generally following Church policies in how frequently they hold administrative meetings and who attends.
- 3. Most ward councils spend more time on missionary work and meeting individual/family needs than other things.**
4. Male leaders tend to report more challenges and less support in fulfilling their callings.

Time Spent In Ward Council

None or
Almost None

A Little

Some

A Lot

Missionary Work

Needs of Specific Members

Reporting By Organization

Planning Activities

General Ward Needs

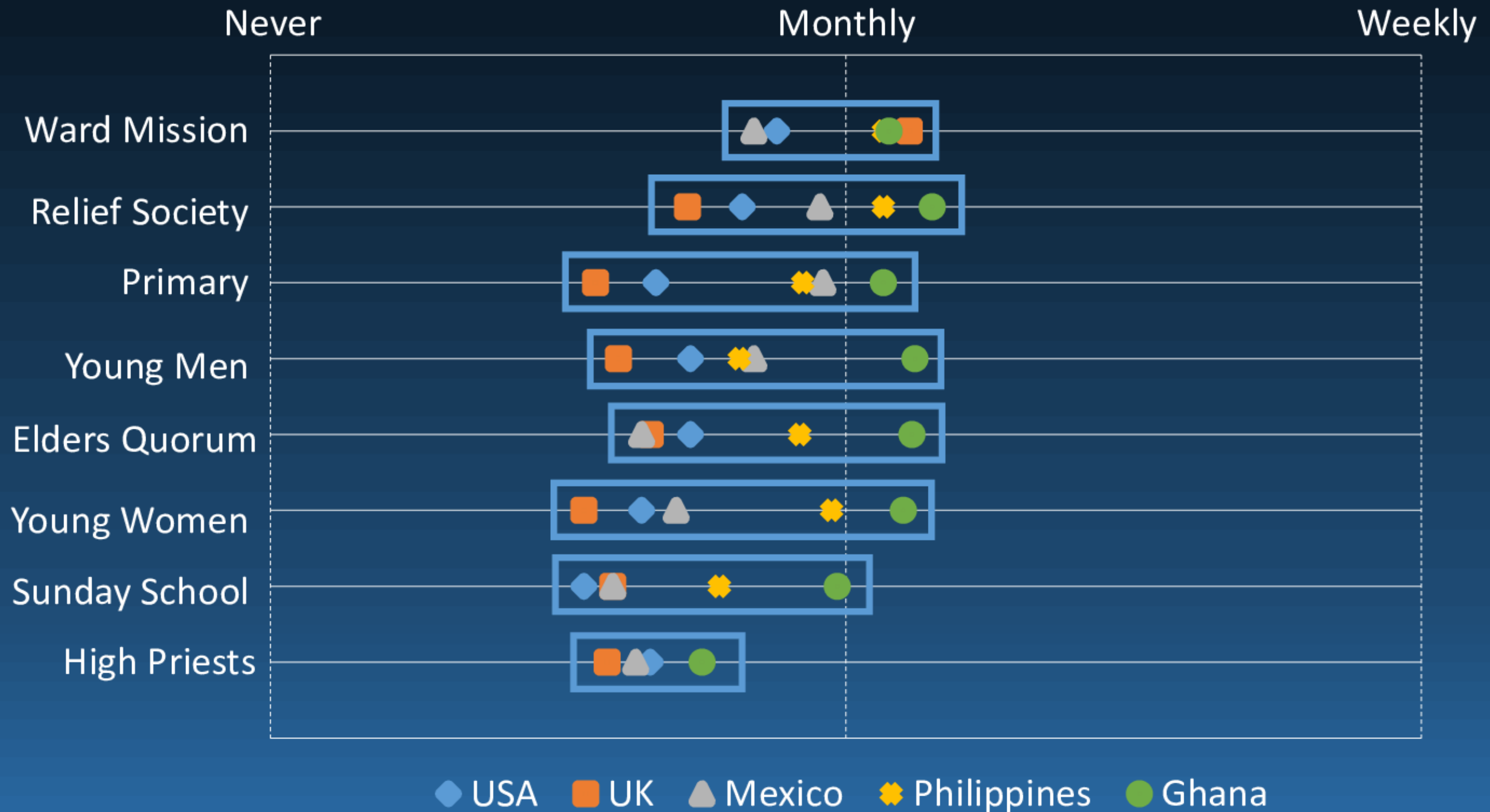
Calendaring

Temple/Family History

◆ USA ■ UK ▲ Mexico ✱ Philippines ● Ghana

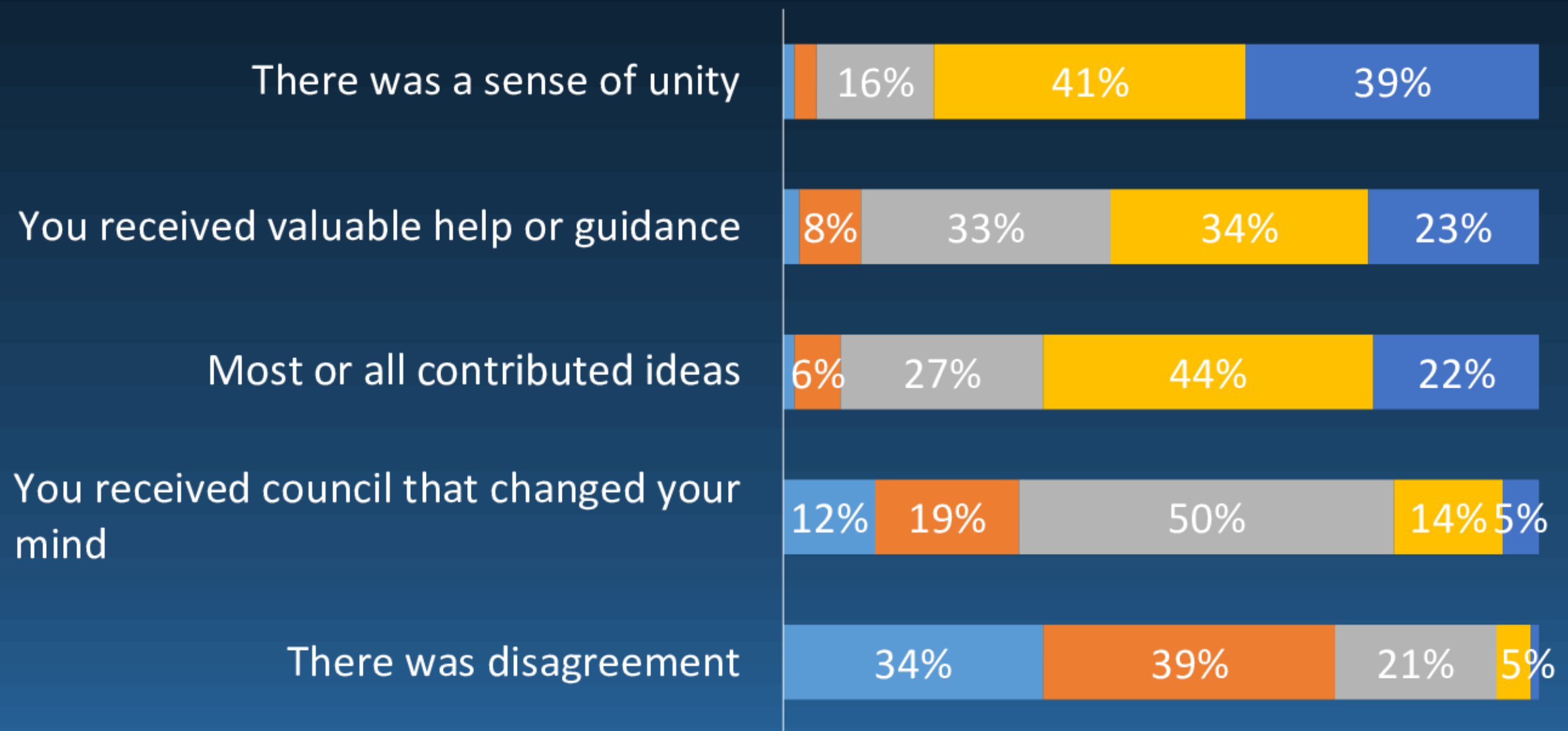


Time Spent In Ward Council on Specific Organizations



Ward Council Dynamics

■ Never ■ Rarely ■ Sometimes ■ Quite Often ■ Very Often



Bishops tend to report more positive dynamics than others; Primary presidents and Sunday school presidents tend to report the less positive dynamics than others.

Major Findings

1. Compared to the USA, ward leaders and councils in international areas face many more challenges (e.g., personal limitations, staffing).
2. Wards are generally following Church policies in how frequently they hold administrative meetings and who attends.
3. Most ward councils spend more time on missionary work and meeting individual/family needs than other things.
- 4. Male leaders tend to report more challenges and less support in fulfilling their callings.**

Ward Council Experience and Time Commitment

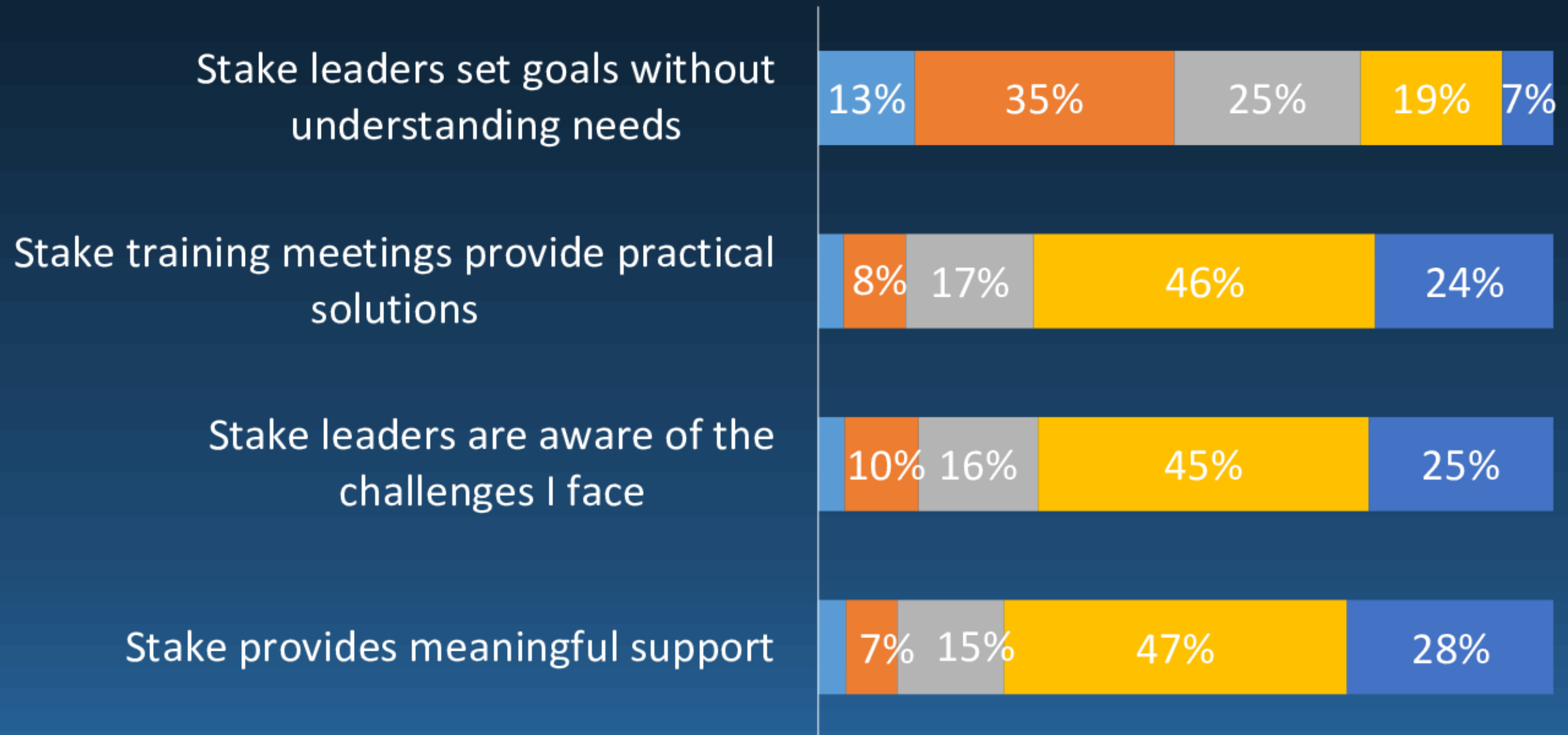
On average, ward mission leaders, Young Men presidents, and Sunday School presidents tend to have higher turnover.

	Bishop	Clerk	HPGL	EQP	WML	YMP	SSP	RSP	YWP	PP
Months in calling	25	15	12	14	8	10	9	14	12	12
Hours spent on calling per week	16	6	5	5	5	6	3	9	8	6

Stake Support

Responses for all callings

■ Strongly disagree ■ Disagree ■ Neither ■ Agree ■ Strongly agree



Bishops and female leaders report stronger stake support than EQPs, HPGLs, WMLs, YMPs, and SSPs.

Calling Differences

The ward council callings least likely to be filled include the high priests group leader, executive secretary, ward clerk, and Sunday School president.

The ward council callings least likely to be functioning “okay” or better include the Sunday School president, ward mission leader, elders quorum president, and Young Men president.

	Bishop	Clerk	HPGL	EQP	WML	YMP	SSP	RSP	YWP	PP
Face any limitation “a lot” in fulfilling calling (e.g., work, school, family)	20%	22%	32%	39%	33%	28%	29%	22%	18%	24%

